



Prisca Lephale
064 817 6913
prisca@snooksestates.co.za

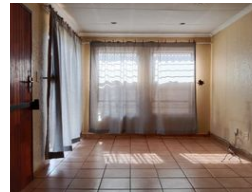
Contact Head Office

083 5646860

43 Main Rd
Meredale
Johannesburg



Web Ref RL4358



R890,000

Monthly Bond Repayment R9,186.48
Calculated over 20 years at 11% with no deposit.

Transfer Costs R28,244.00 **Bond Costs** R21,450.00

These calculations are only a guide. Please ask your conveyancer for exact calculations.



2 Bedroom House For Sale In Alveda Park

This stand-alone house is in the desirable Alveda Park, Johannesburg South area. It offers a comfortable and convenient living experience with the following features:

Property Details:

- 2 Fitted Bedrooms: Enjoy the comfort of built-in wardrobes in both bedrooms.
- 2 Full Bathrooms: Modern and fully equipped bathrooms for your convenience.
- Fitted Kitchen: A well-appointed kitchen with ample storage and modern fittings.
- Open Plan Lounge: A spacious lounge area that connects to the kitchen, perfect for entertaining and family gatherings.

Additional Features:

- Storage Room: Extra space for storing your belongings.
- Double Carport: Secure parking for two cars.
- Property Size: 336 Square Meters

Features

Pets Allowed	Yes			
Interior		Exterior		Sizes
Bedrooms	2	Carports / Parkings	1	Floor Size
Bathrooms	2	Security	Yes	336m ²
Kitchens	1	Pool	No	
Recep. Rooms	1			

