

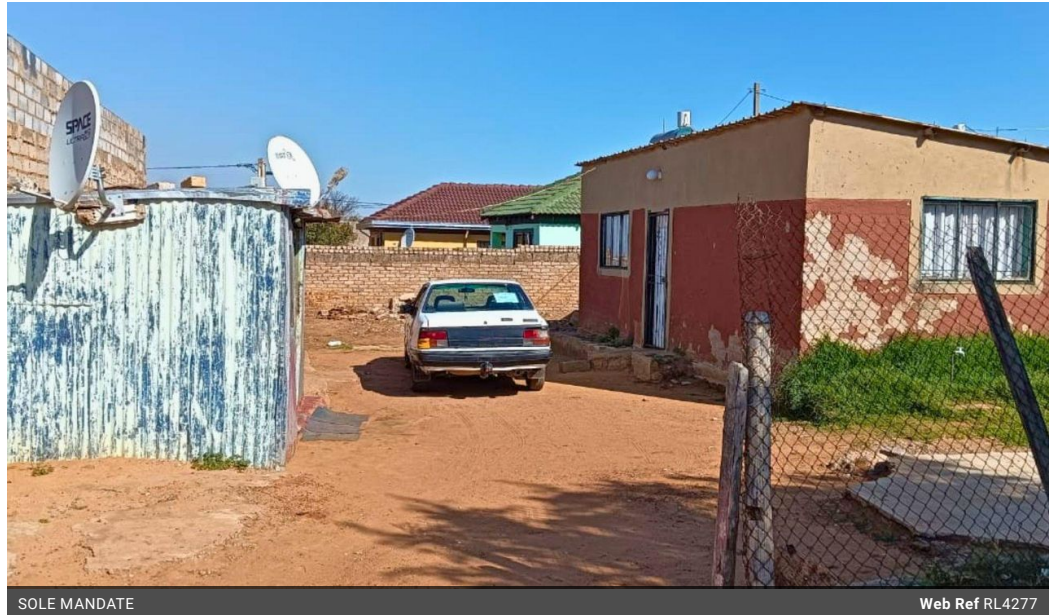


Sidwell Segalwe
083 383 1822
sidwell@snooksestates.co.za

Contact Head Office

083 5646860

43 Main Rd
Meredale
Johannesburg



SOLE MANDATE

Web Ref RL4277



R250,000

Monthly Bond Repayment R2,580.47
Calculated over 20 years at 11% with no deposit.

Transfer Costs R13,821.00 **Bond Costs** R9,510.00

These calculations are only a guide. Please ask your conveyancer for exact calculations.



1 Bedroom House for Sale in Tshepisoong Phase 2

Features:
Bedroom: 1
Open Plan Lounge/Kitchen: 1
Toilet: 1

Land Size: 310 square meters

This charming 1-bedroom house in Tshepisoong Phase 2 offers a simple yet functional layout. The open-plan design seamlessly connects the lounge and kitchen areas, providing a spacious and inviting atmosphere. The property includes one bedroom and a toilet, making it ideal for a single person or a couple. With a semi-walled boundary and a generous land size of 310 square meters, there is plenty of potential for future expansions or garden space.

Don't miss this opportunity to own an affordable property in Tshepisoong Phase 2. Contact us today to arrange a viewing or for more information.

Features

Pets Allowed Yes

Interior
Bedrooms 1
Bathrooms 1
Kitchens 1
Recep. Rooms 1

Exterior
Security Yes
Pool No

Sizes
Land Size 310m²

