

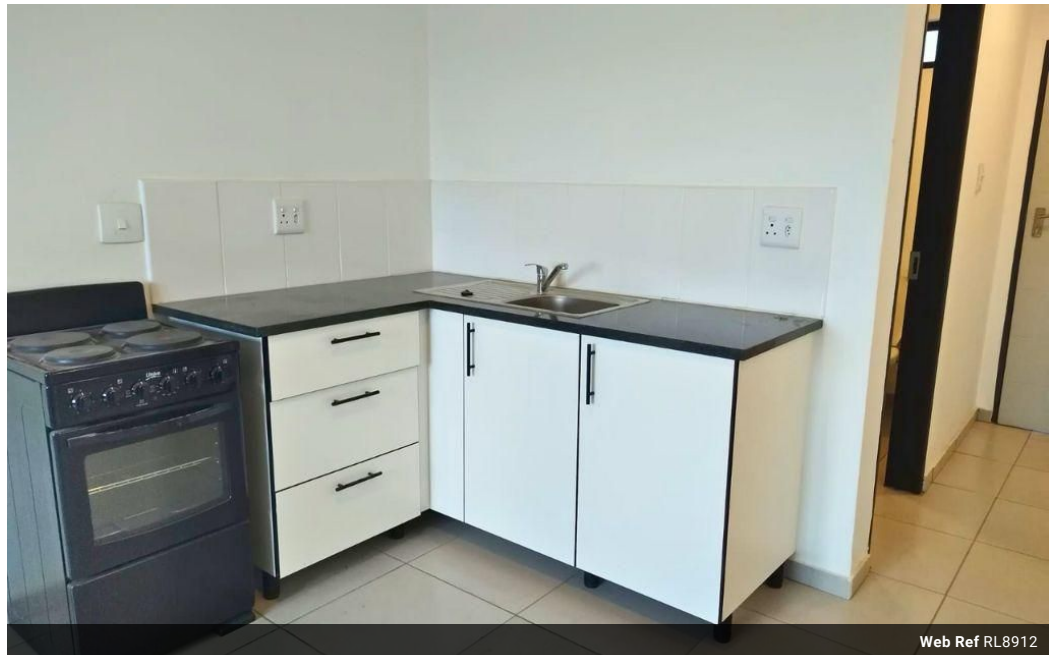


Glen Mofokeng
083 988 2636
glen@snooksestates.co.za

Contact Head Office

083 5646860

43 Main Rd
Meredale
Johannesburg



Web Ref RL8912



R560,000

Monthly Bond Repayment R5,780.25
Calculated over 20 years at 11% with no deposit.

Transfer Costs R21,217.00 **Bond Costs** R15,795.00
These calculations are only a guide. Please ask your conveyancer for exact calculations.

 2  1

Affordable Housing Development in Protea Glen

No more worries about load-shedding! With solar power, we've got you covered for a smooth and budget-friendly living experience!

Looking for a cosy, special place to live? Explore our brand-new village! You can hang out with your family at the communal braai area while the kids have fun in the play zone.

Located inside a secure gated entrance, close to Protea Glen Mall.

Features

Pets Allowed	Yes		
Interior		Exterior	
Bedrooms	2	Security	Yes
Bathrooms	1	Pool	No
Kitchens	1		
Recep. Rooms	1		
Furnished	No		

