

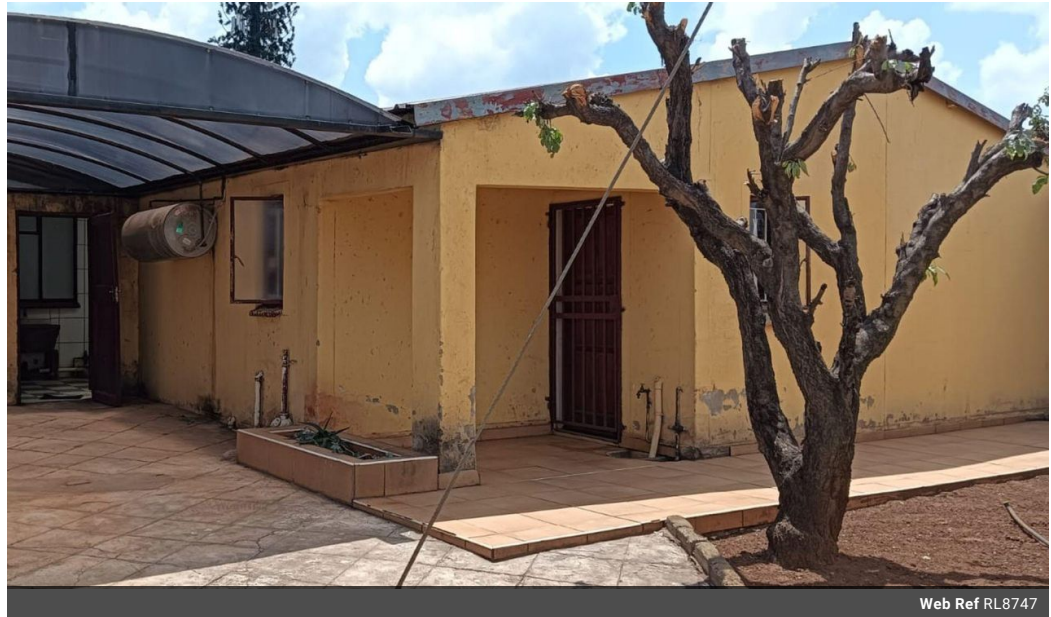


**Sidwell Segalwe**  
083 383 1822  
sidwell@snooksestates.co.za

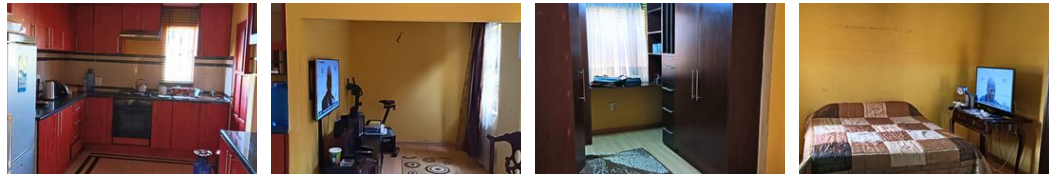
Contact Head Office

083 5646860

43 Main Rd  
Meredale  
Johannesburg



Web Ref RL8747



R750,000

**Monthly Bond Repayment** R7,741.41  
Calculated over 20 years at 11% with no deposit.

**Transfer Costs** R25,898.00    **Bond Costs** R19,565.00  
These calculations are only a guide. Please ask your conveyancer for exact calculations.

 2     1

### 2-Bedroom House for Sale in Protea Glen Extension 16

Bedrooms:

2 spacious bedrooms.

Main bedroom features a fitted closet for ample storage.

Bathroom: 1 full bathroom for convenience.

Kitchen: Fully fitted kitchen with modern finishes.

Living Area: Open-plan lounge and dining area, creating a bright and spacious living environment.

Additional Features:

2 outside rooms, perfect for storage, a home office, or guest accommodation.

Business potential: Space suitable for a butchery, grocery store, or other business ventures.

### Features

**Pets Allowed** Yes

**Interior**

|              |    |
|--------------|----|
| Bedrooms     | 2  |
| Bathrooms    | 1  |
| Kitchens     | 1  |
| Recep. Rooms | 1  |
| Furnished    | No |

**Exterior**

|                     |     |
|---------------------|-----|
| Carports / Parkings | 2   |
| Security            | Yes |
| Pool                | No  |

